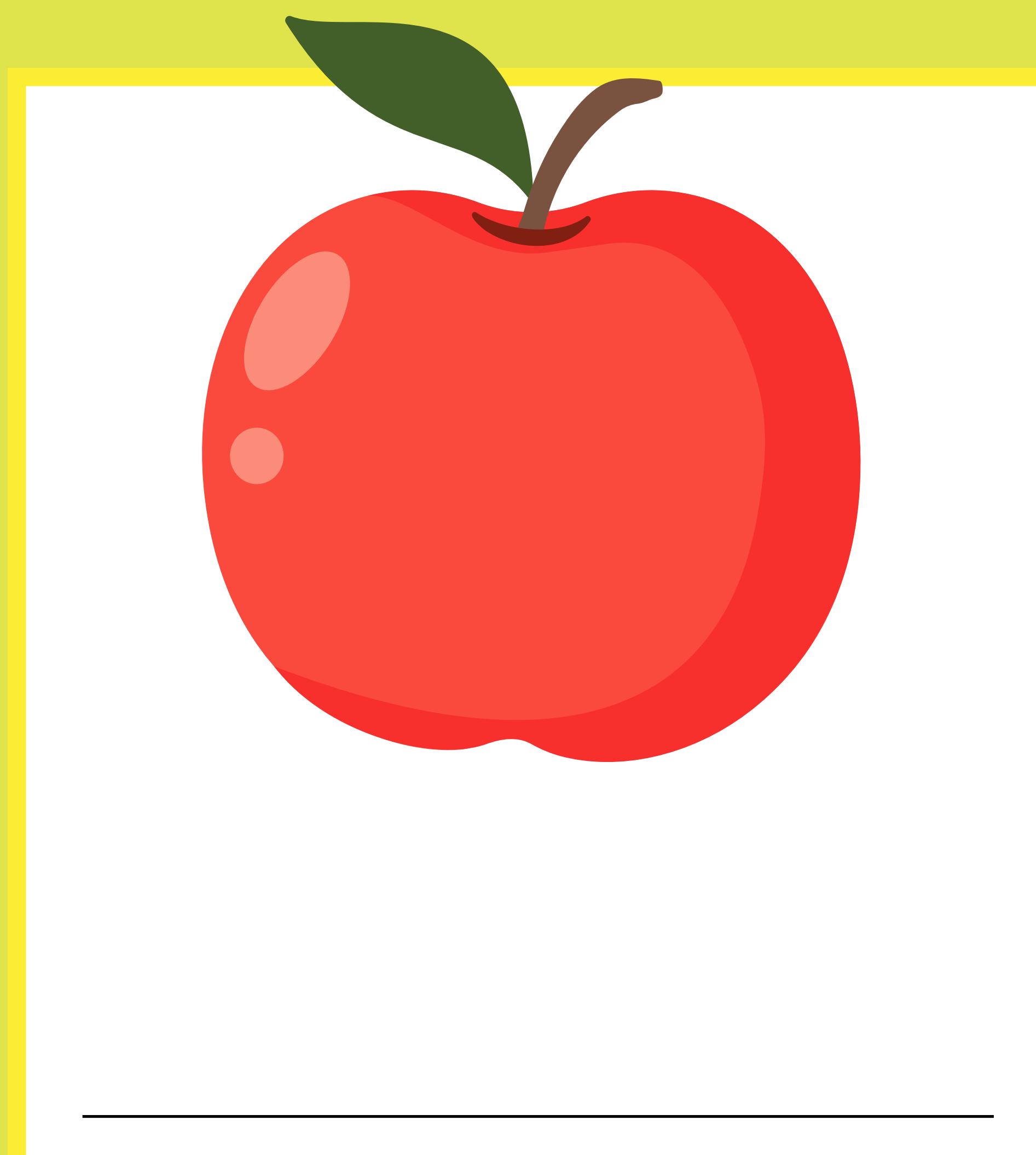
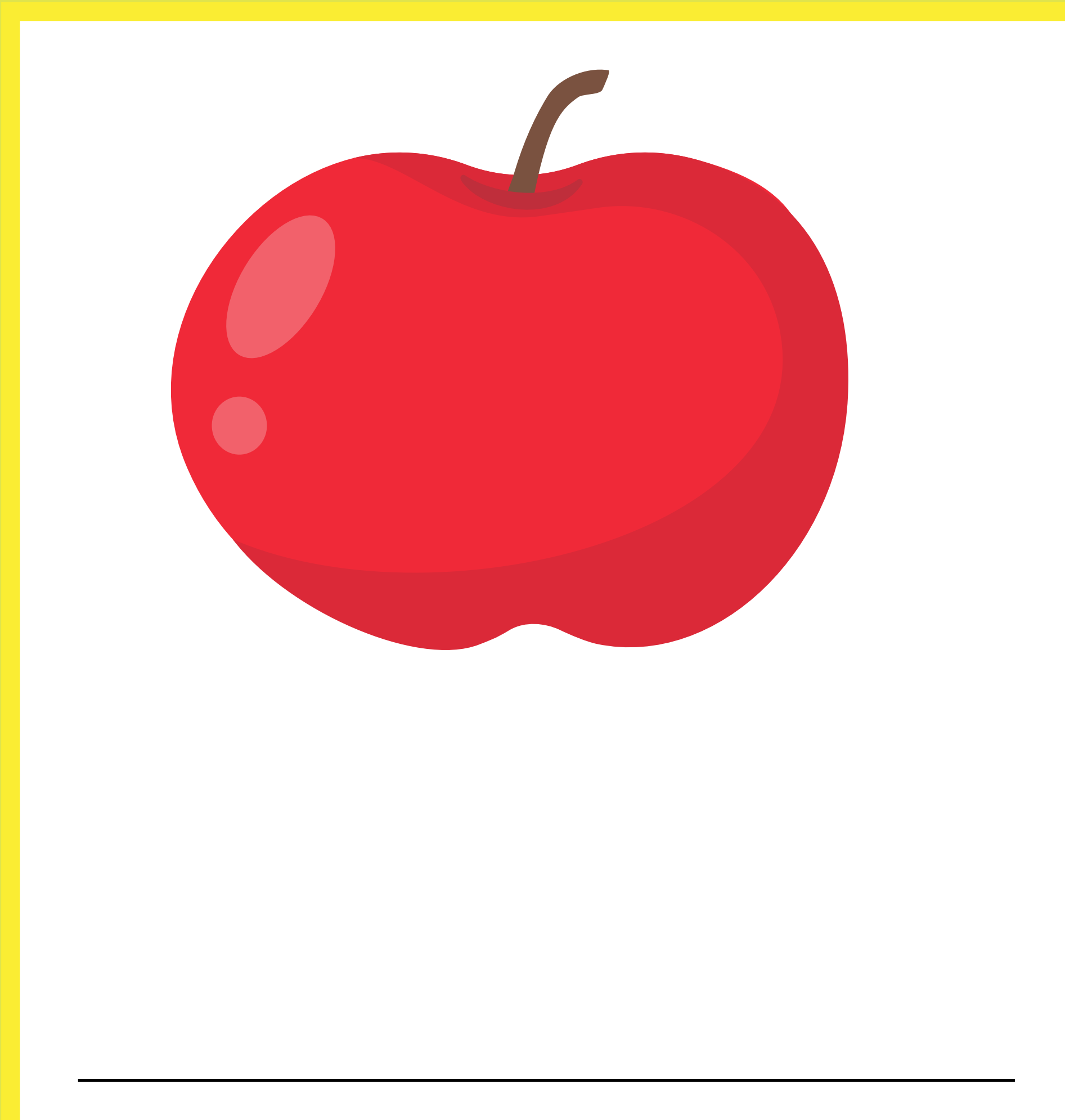
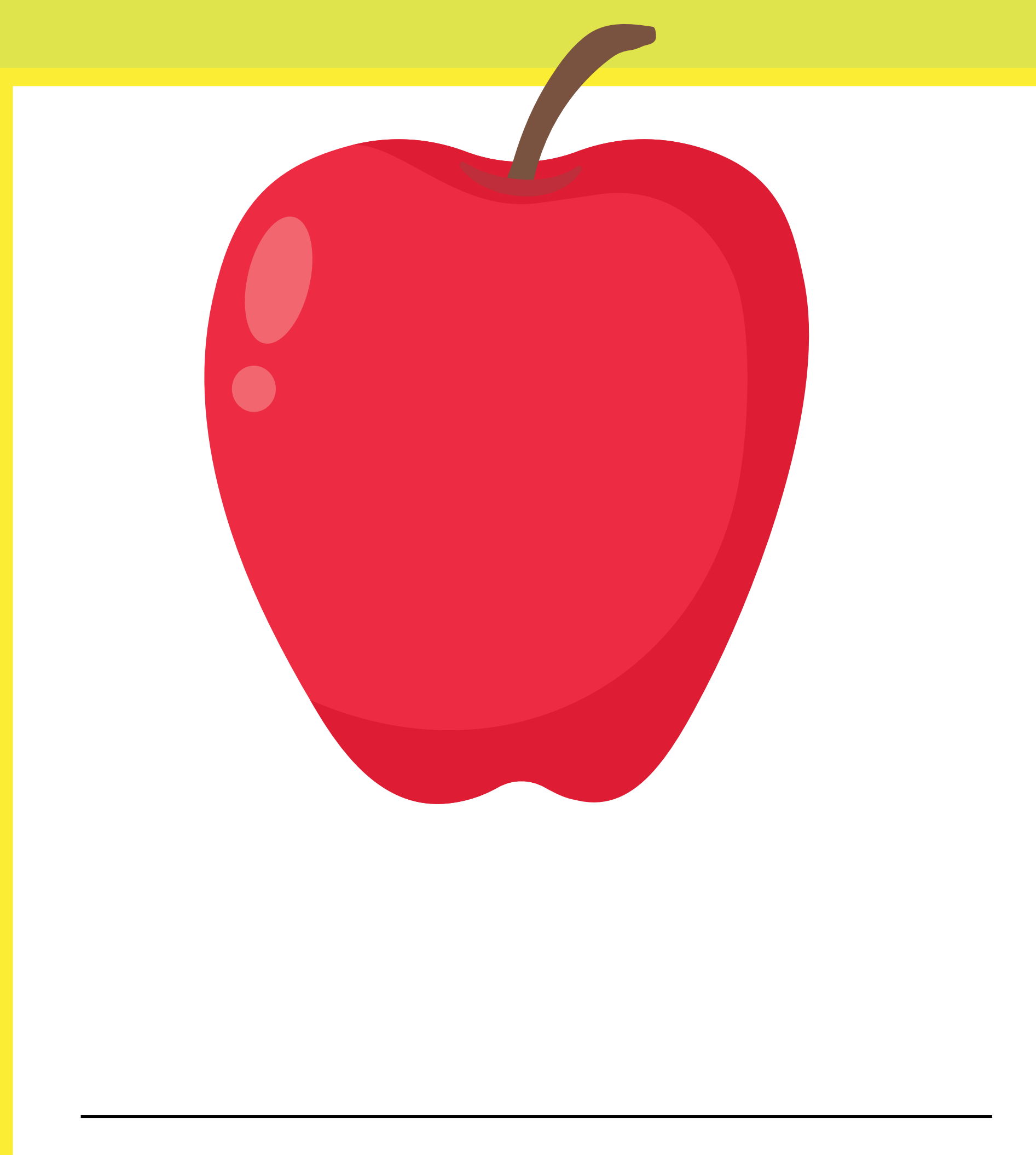
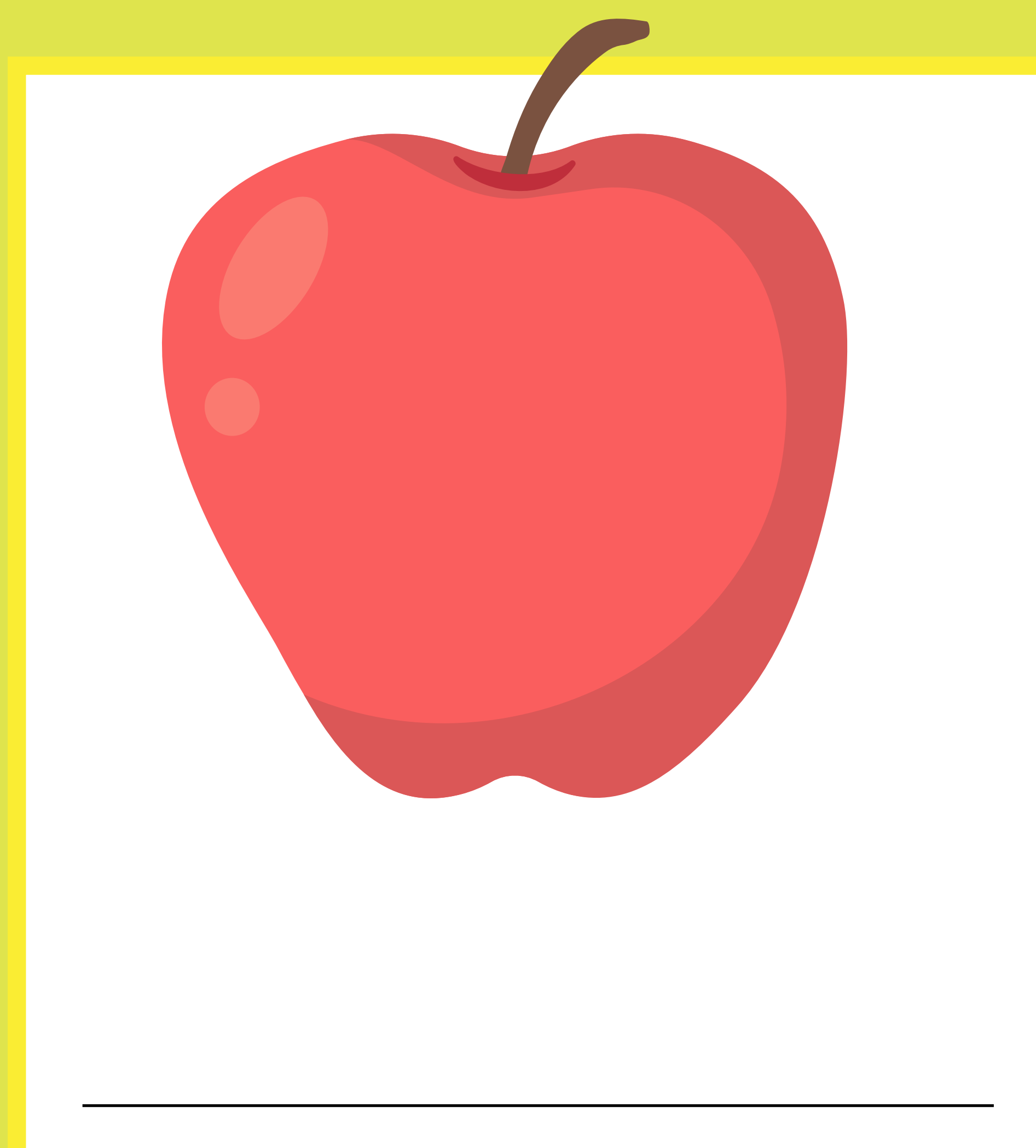
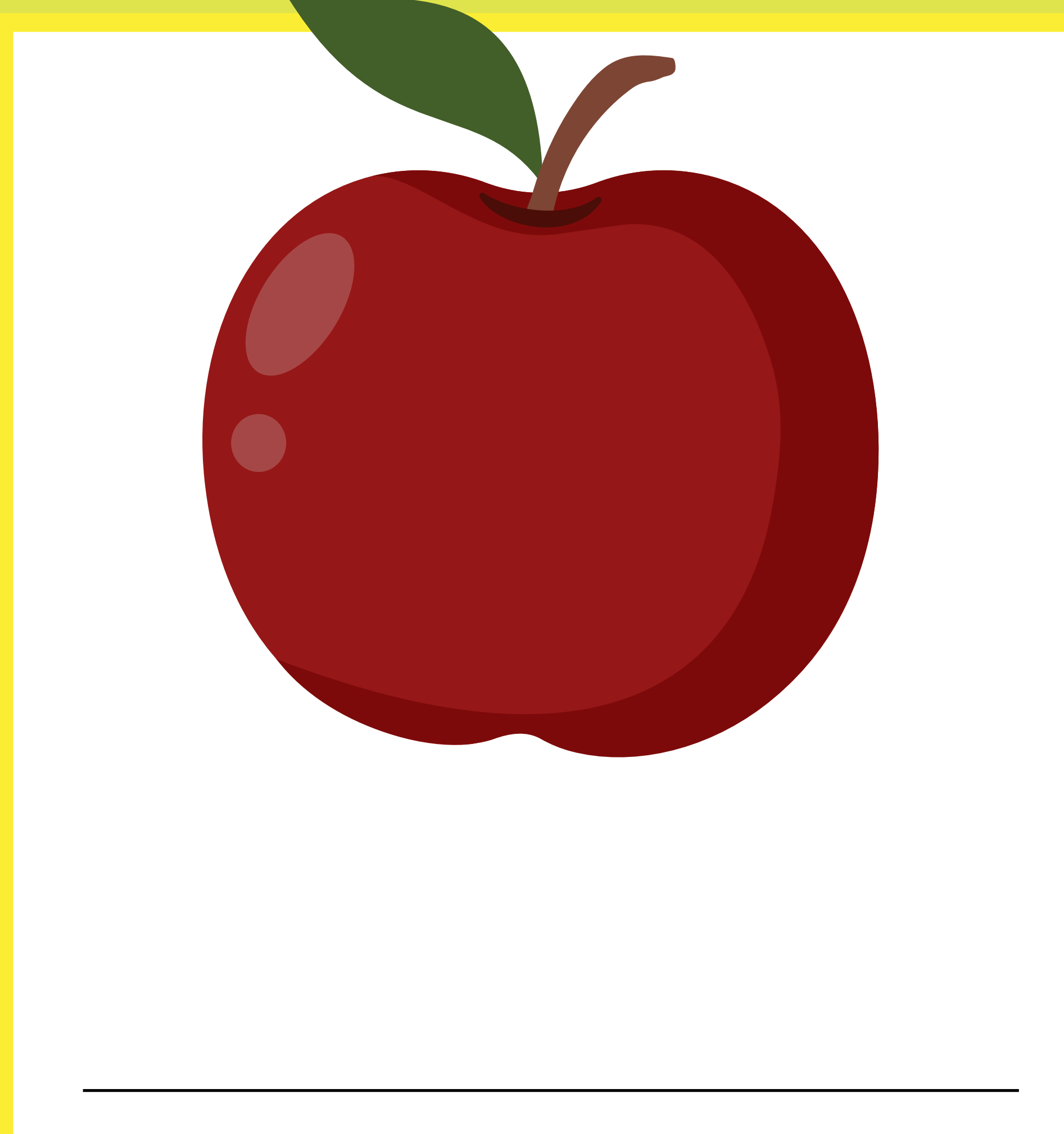
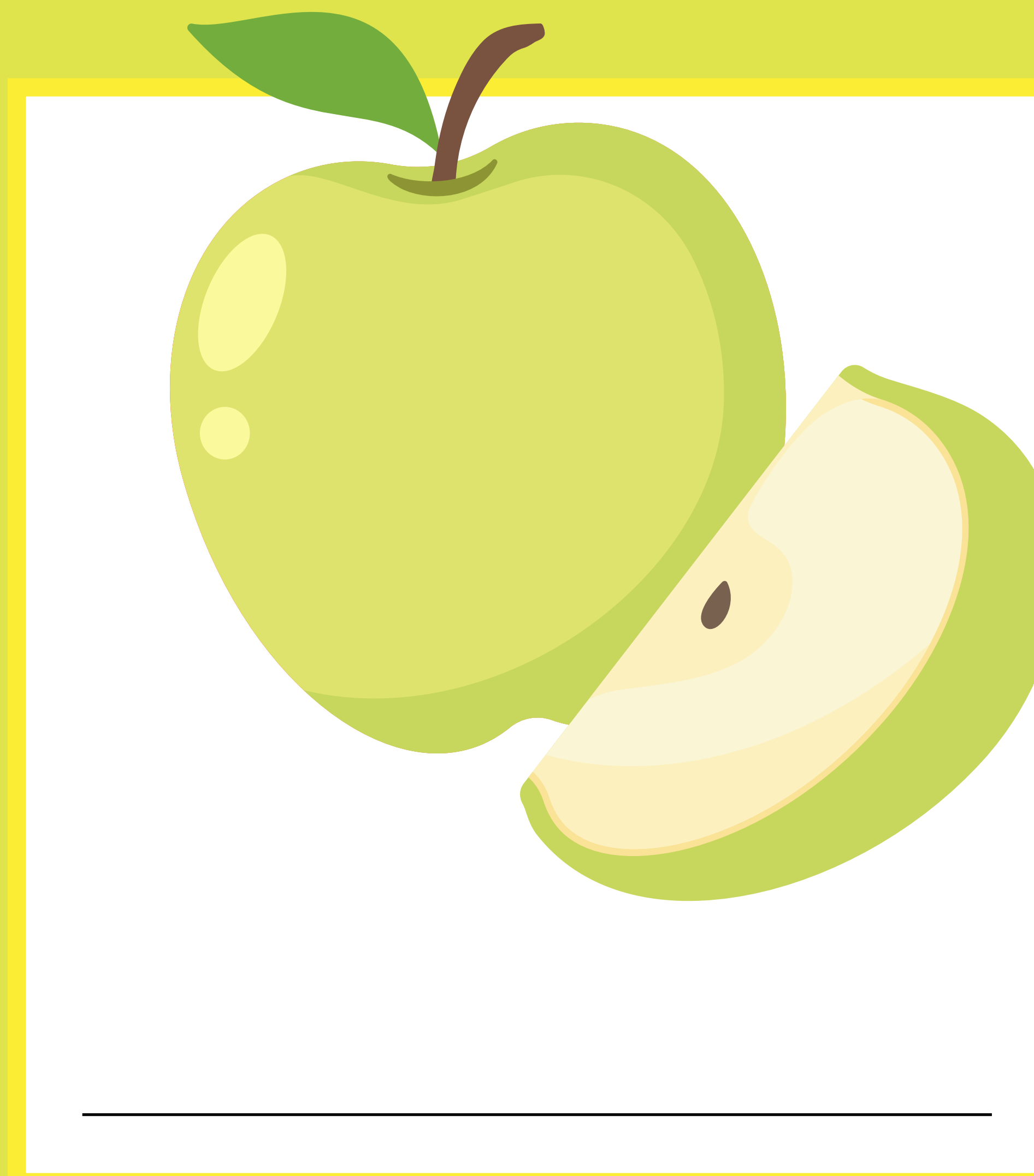
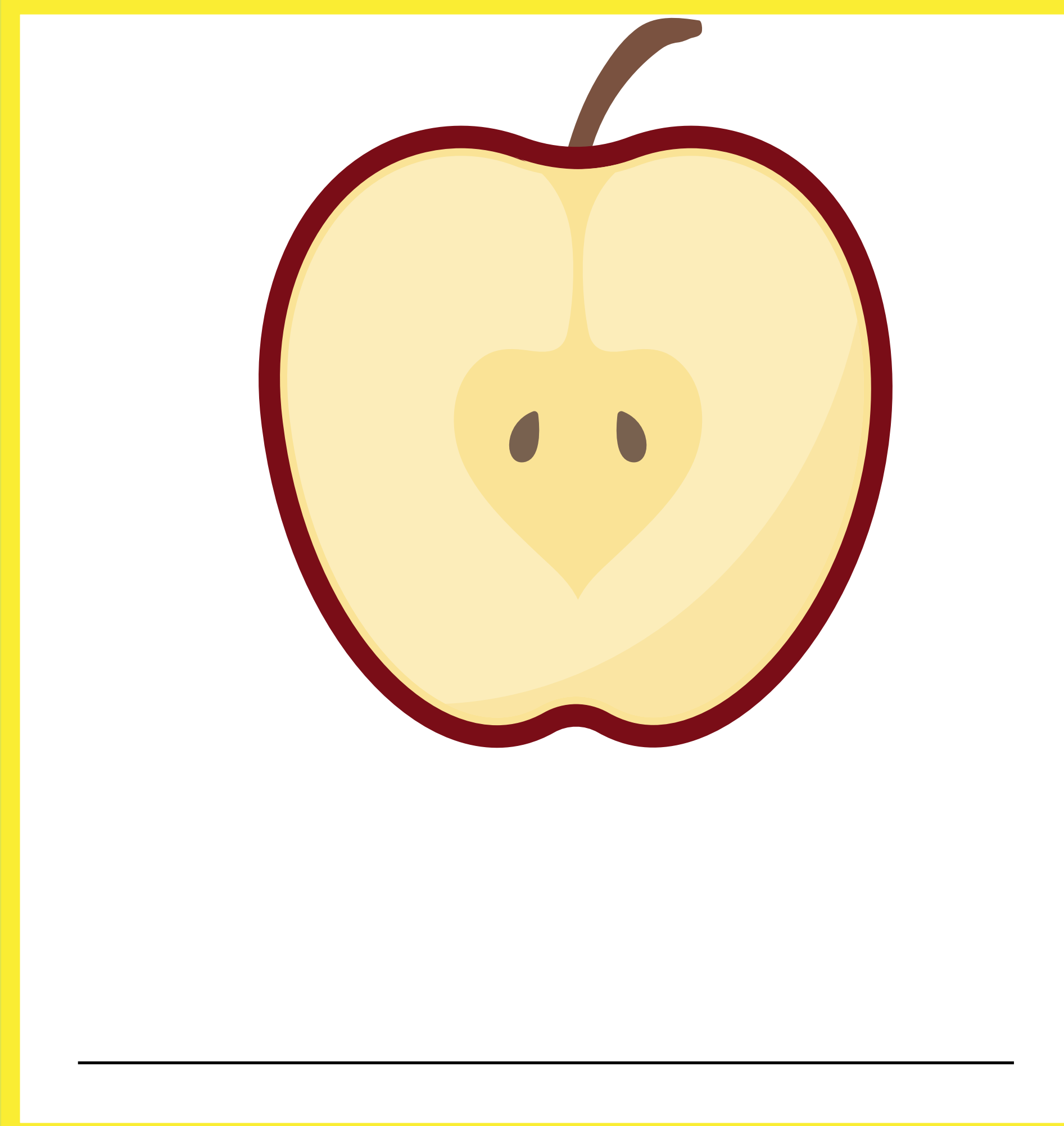
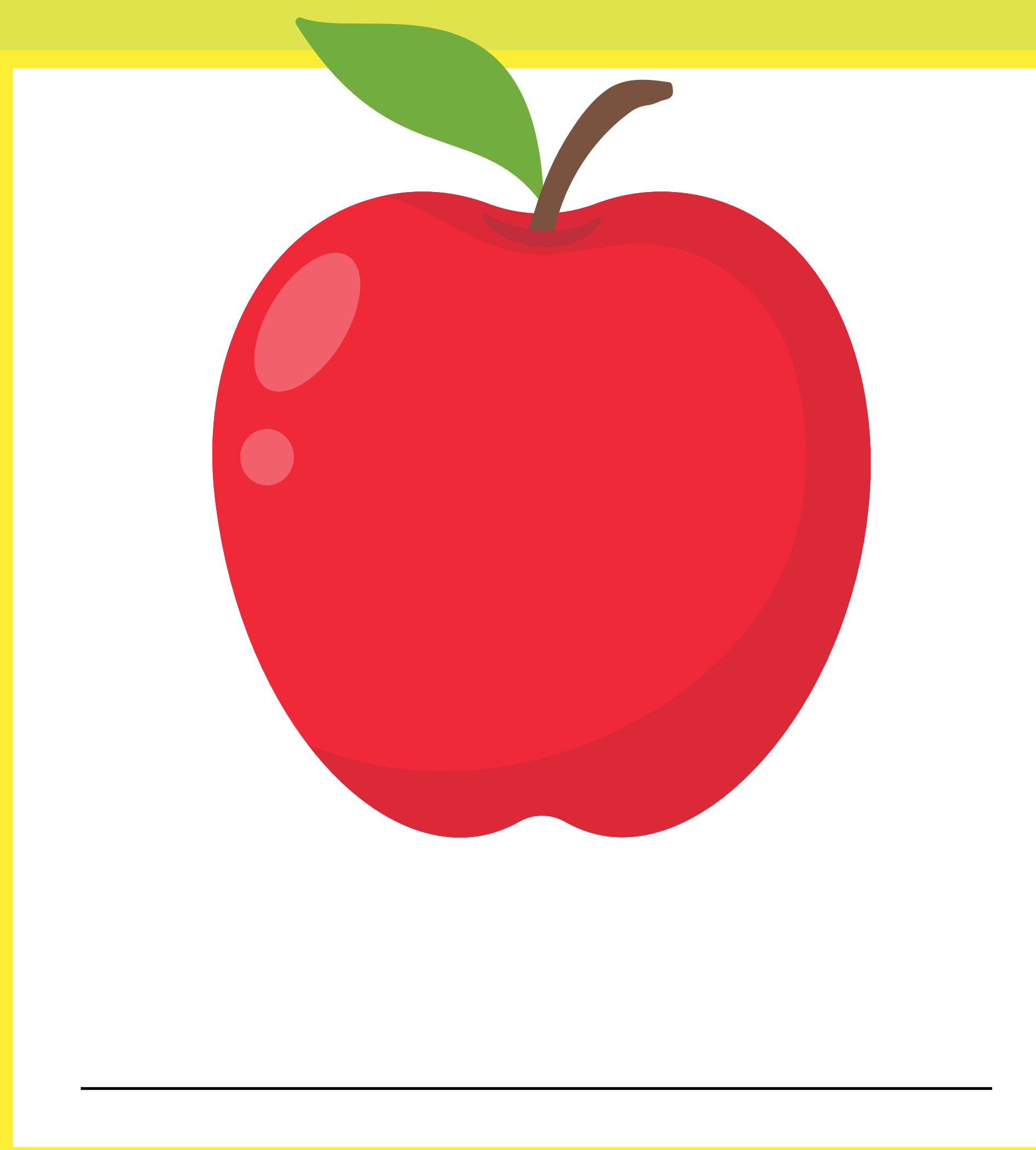


Apple Bingo

There are more than 2,500 types of apples grown in the United States—that's a lot! Try a few of them this fall and win Apple Bingo. On the grid below, write in each type of apple you try. When you've filled out a column, row, or diagonal, you win! Try an apple for each of the rest of the spaces for even more fall fun.



Common varieties to look for:

- Sweet Tango
- First Kiss
- McIntosh
- Honeycrisp
- Haralson
- Gala
- Fuji
- Paula Red
- Zestar
- Cortland
- William's Pride
- Centennial Crab
- SnowSweet

Answer these questions for each type of apple you try:

What flavors do you taste?
Sweet, sour, sugary?

How does the apple feel in your mouth?
Soft, crunchy?

How is this apple different from the others you've tried?